



SUMA

G L O B A L
M A N A G E M E N T O F
T H E W A S T E C Y C L E
B U I L D I N G A B E T T E R
E N V I R O N M E N T





Manuel Costa
Chairman of the Board of Directors



Pablo Barreiro
Vice-Chairman of the Board of Directors



SUMA's Management is committed to creating added value for customers, shareholders, workers and the waste sector, through sustainable and safe performance, focus on emerging needs, innovation and commitment in activities that are of public service.

The experience of more than two and a half decades and the company's organizational policy - based on the best environmental practices and governance, recognized by the certification in the areas of quality, environment and safety - make the organization a reference in Portugal, as well as in the international markets it operates in.



Carlos Garcez
Chief Operating
Officer (COO)



Rui Lopes
Chief Operating
Officer (COO)



Nuno da Costa
Chief Commercial
Officer (CCO)

Manuel Costa
Chairman



Waste
Collection



Public
Cleaning



Waste
Treatment
Management



Environmental
Education
And Awareness



Laboratory



Training



Waste Collection



Aiming to comply with the most demanding quality requirements and making use of technologically advanced equipment, SUMA invests in a model for recovering waste and its potential for conversion, which has already guaranteed for four consecutive years* the voted by the public recognition as an Environmental Trusted Brand.

*2017-2020

MUNICIPAL SOLID WASTE



- MIXED/UNSORTED WASTE
- MIXED/UNSORTED WASTE DOOR-TO-DOOR
- SELECTIVE COLLECTION
- MULTIMATERIAL DOOR-TO-DOOR

GREEN WASTE



INDUSTRIAL & COMMERCIAL WASTE



- GLOBAL WASTE MANAGEMENT
- SANITATION
- CONTAINERIZATION, COLLECTION
AND TRANSPORT

BULKY WASTE



USED LUBRICATING OILS



- COLLECTION AND RECOVERY

CONSTRUCTION AND DEMOLITION WASTE



LIQUID EFFLUENTS



- SEWAGE COLLECTION AND MANAGEMENT
- CLEANSING OF SEWAGE COLLECTORS

USED COOKING OIL







Public Cleaning





The optimization of hygiene and health in public spaces as a way to improving the quality of life of the population reflects the efforts and investments in this area of activity, recognized through the renewal of partnership relations, which, in some cases, exceeds two decades.



URBAN CLEANING



- MECHANICAL SWEEPING
- MANUAL SWEEPING
- MECHANICAL WASHING
- MANUAL WASHING
- MECHANICAL WASHING OF LITTER BINS
- COLLECTION, MAINTENANCE AND CLEANING OF LITTER BINS
- WEED CONTROL AND REMOVAL
- URBAN VACUUM SWEEPING
- FAIRGROUNDS AND MARKETS CLEANING
- GUTTERS, DITCHES AND DRAINS CLEANING
- SURFACE CLEANING OF WATER STREAMS
- DESIGN, CONSTRUCTION AND OPERATION OF KENNELS
- COLLECTION OF WANDERING ANIMALS

PUBLIC DISINFECTION



- WASHING, CLEANING AND DISINFECTION
 - ▲ PUBLIC SPACES
 - ▲ BINS AND CONTAINERS
 - ▲ URBAN FURNITURE

BEACH CLEANING



- MECHANICAL CLEANING OF SAND
- MANUAL CLEANING OF SAND
- SAND SANITATION
- COLLECTION, MAINTENANCE AND CLEANING OF BINS AND CONTAINERS





Waste Treatment Management





As the last stage of a process aiming at finding the best destination for waste, this area is representative of SUMA's ability to offer complete and integrated solutions. In this regard, the organization features several tens of operational structures, focused on optimizing natural and financial resources.



SORTING PLANTS



- DESIGN, CONSTRUCTION AND OPERATION

INTEGRATED WASTE YARDS



- DESIGN, CONSTRUCTION AND OPERATION

MECHANICAL - BIOLOGICAL TREATMENT PLANTS



- DESIGN, CONSTRUCTION AND OPERATION

LANDFILLS



- DESIGN, CONSTRUCTION AND OPERATION

ENERGY RECOVERY PLANTS



- DESIGN, CONSTRUCTION AND OPERATION

TRANSFER STATIONS

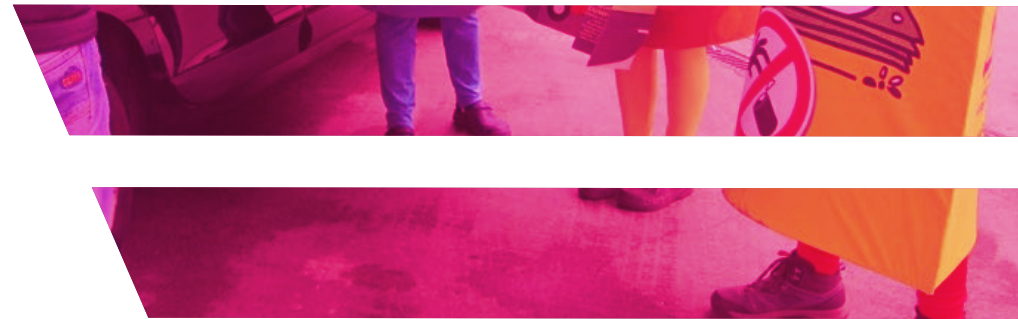


- DESIGN, CONSTRUCTION AND OPERATION
- WASTE TRANSFER AND TRANSPORT





Environmental Education And Awareness





Since its inception, the investment in this area is a pillar of SUMA's social responsibility policy and has been one of the key elements in the differentiation of the company's performance. The focus on the civic formation of the population aims environmental literacy and thus more environmentally responsible and engaged generations.

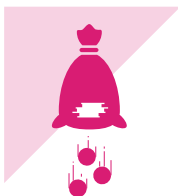
CREATION



- STRATEGIC INTERVENTION PLANS
- AWARENESS CAMPAIGNS
- EDUCATIONAL AND UTILITARIAN SUPPORTS
- PROCEDURE GUIDES

- MOBILE AWARENESS UNITS
- FIXED AWARENESS STRUCTURES
- INTERACTIVE PLATFORMS

IMPLEMENTATION



- PROACTIVE CONTACT
- FORMATIVE/SYNCHRONOUS SESSIONS
- INDOOR/OUTDOOR/ROBOTIC ANIMATION
- MULTIMEDIA/SENSORIAL EXPLORATION

- PASSIVE/NETWORKED DISTRIBUTION
- MAJOR AWARENESS ACTIONS
- INTRODUCTION OF DOOR-TO-DOOR SYSTEMS

EVALUATION



- PEDAGOGICAL AUDITS
- SKILLS CERTIFICATION
- STUDY AND ANALYSIS OF RESULTS
- PROCESS MONITORING
- TECHNICAL ADVICE AND SUPERVISION

THEMES



- WASTE GENERATION PREVENTION
- RISK AND NOISE PREVENTION
- CIRCULAR ECONOMY
- ACTIVE CITIZENSHIP PROFILE
- PUBLIC HEALTH PREVENTION







Laboratory



SUMALAB

www.sumalab.pt

As self-assessment and monitoring of the systems are essential for maintaining the quality of the services, granting simultaneously the detection and correction of anomalies, SUMA performs the integrated control of the environmental parameters in the waste and water treatment systems through its laboratory, which is accredited by the NP EN ISO 17025 for more than a hundred tests for water, liquid effluents, solid waste and sampling categories.



WATER



- ANALISYS:
 - ▲ DRINKING WATER
 - ▲ BATHING WATER
 - ▲ POOL WATER
 - ▲ WATER FROM INDUSTRIAL PROCESSES
 - ▲ WASTE AND EFFLUENT WATER
 - SURFACE AND GROUNDWATER
 - LEACHATE
 - MICROBIOLOGICAL AND PHYSICOCHEMICAL
 - HARVESTING AND TRANSPORTATION OF SAMPLES
-

WASTE



- PHYSICOCHEMICAL WASTE CHARACTERIZATION (WASTE AUDIT)
 - CHARACTERIZATION OF MUD AND SOIL FOR AGRICULTURAL VALORIZATION
 - CHARACTERIZATION OF WASTE STREAMS
 - CHEMICAL ANALYSIS OF SOIL, SLUDGE AND ORGANIC FERTILIZERS
-

TREATMENT SYSTEMS



- ENVIRONMENTAL MONITORING OF LANDFILLS
- CHARACTERIZATION OF WATER TREATMENT PROCESSES
- STUDIES ON ENVIRONMENTAL VARIABLES







Training



Aiming continuous improvement and better technical qualification of its human resources, training investments correspond to a certified area, ensuring that it has a formative structure with highly qualified workers with the skills to design, organize and implement activities that integrate different training types directed to the organization itself or external entities.



FORMAT



- TRAINING IN THE WORKPLACE
 - ▴ TRAINING SESSIONS
 - ▴ TUTORS PROJECT
 - ▴ 10 MINUTES OF SECURITY PROJECT (TOOLBOX TALKS)
- DISTANCE TRAINING AND E-LEARNING

THEMES



- INFORMATION TECHNOLOGY AND COMPUTER SCIENCE
- ENGINEERING AND WASTE MANAGEMENT RELATED TECHNIQUES (OPERATIONAL AND FUNCTIONAL PERSPECTIVES)
- ENVIRONMENTAL PROTECTION
- HEALTH AND SAFETY AT WORK
- LAW AND REGULATIONS
- LIFE SCIENCES
- MANAGEMENT AND ADMINISTRATION
- SOCIAL AND BEHAVIOURAL SCIENCES
- TRAINING TEACHERS / TRAINERS AND EDUCATIONAL SCIENCES







Headquarters and
Aveiro's Service Center



Training
Services



Best Waste Management
& Collection Company · Portugal · 2019



Trusted Brand - Environment
2017 · 2018 · 2019 · 2020

Rua Mário Dionísio, 2 - 2799-557 Linda-a-Velha



+351 217 997 700

+351 217 997 763



geral@suma.pt

